

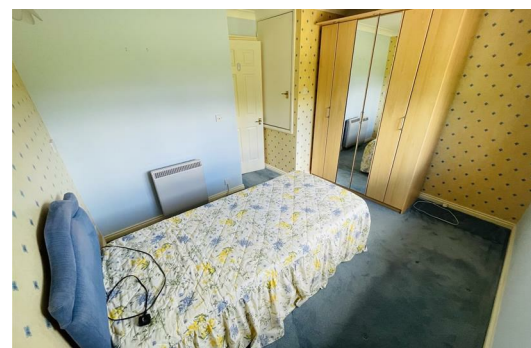
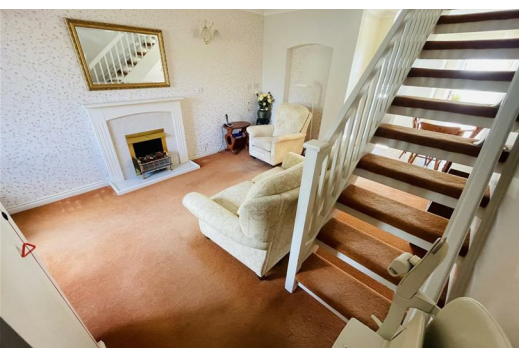


Larkspur Court, Bede Village Bedworth CV12 0PE £162,500

Nestled in the charming retirement village of Bede Village, Bedworth, this delightful mid mews house offers a perfect blend of comfort and community living. With an inviting reception rooms, this property provides ample space for relaxation and entertaining guests. The two well-proportioned bedrooms ensure a restful retreat, while the shower room is conveniently located to serve residents and visitors alike.

One of the standout features of this home is its access to communal gardens, where residents can enjoy the beauty of nature and engage with neighbours in a serene environment. The communal areas foster a sense of community, making it an ideal setting for those seeking companionship and support in their later years.

This property is not just a house; it is a welcoming home within a vibrant community. With its thoughtful layout and desirable location, it presents an excellent opportunity for those looking to embrace a fulfilling lifestyle in a peaceful setting. Whether you are downsizing or seeking a new chapter in life, this terraced house in Bede village is sure to meet your needs and exceed your expectations. This development is for over 55's



Entrance

Via canopy porch leading to entrance leading into:

Entrance Hall

Coving to textured ceiling, two openings, one to lounge area and other to cloak store,

Cloak Store

With hanging rail

Lounge

14'0" x 11'10" (4.26m x 3.61m)

Double glazed window to front, electric storage heater, telephone point, TV point, wall lights, coving to textured ceiling, stairs to first floor landing with spindles and stair lift, opening through to:

Kitchen/Dining Room

11'9" x 11'7" (3.57m x 3.54m)

Fitted with a matching range of base and eye level units with worktop space over, stainless steel sink with mixer tap with tiled splashbacks, plumbing for washing machine, space for fridge/freezer, electric point for cooker, double glazed window to rear, electric storage heater, part wooden laminate and part karndeian flooring, wall light, coving to textured ceiling, double glazed door to rear, door to storage cupboard.

Landing

Textured ceiling and doors to:

Bedroom

7'10" x 11'8" (2.39m x 3.55m)

Double glazed window to rear, electric radiator, coving to textured ceiling, door to:

Shower Room

Three piece suite comprising tiled area, vanity wash hand basin with cupboard under, close coupled WC and heated towel rail, extractor fan tiled splashbacks, door to:

Airing Cupboard

Airing cupboard housing, hot water cylinder with linen shelving.

Bedroom

10'11" x 11'8" (3.33m x 3.56m)

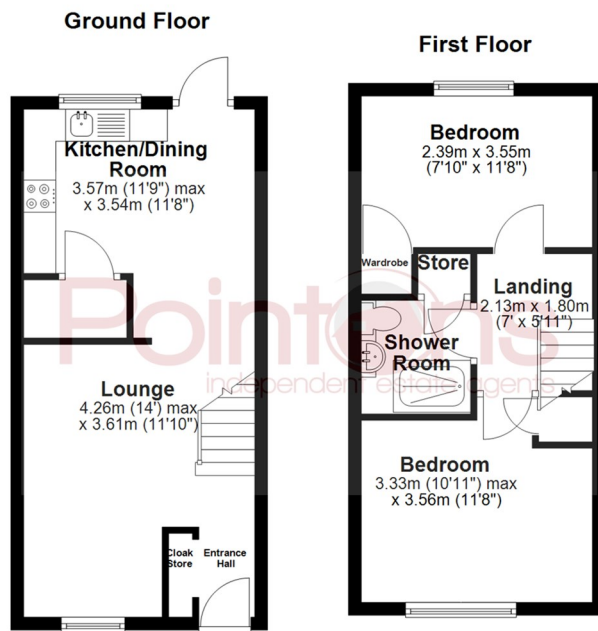
Double glazed window to front, electric storage heater, coving to textured ceiling

Outside

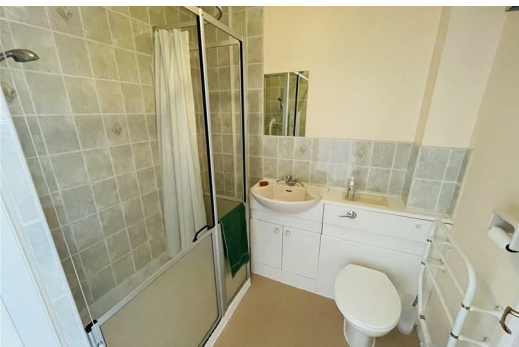
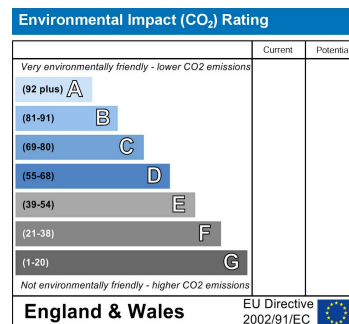
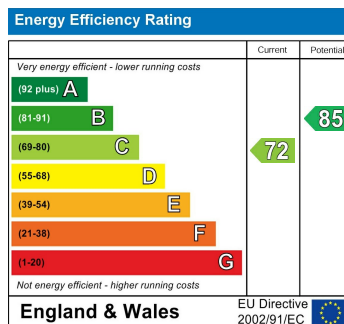
There are communal grounds for residents to enjoy, a community lounge and a shop amongst things.

Leasehold

The current lease has a term of 109 years remaining. The ground rent is £296.91. The service charge is £6567.08. All costs quoted are annual.



All floor plans are for a guide of the layout and not to scale
Plan produced using PlanUp.



WWW.POINTONS-GROUP.COM

2 Bond Gate Chambers
NUNEATON
CV11 4AL
024 7637 3300
nuneaton@pointons-group.com

109 New Union Street
COVENTRY
CV1 2NT
024 7663 3221
coventry@pointons-group.com

74 Long Street
ATHERSTONE
CV9 1AU
01827 711911
atherstone@pointons-group.com

